

## INDEX OF SHEETS

SHEET NO.	DESCRIPTION
1	TITLE SHEET
2	STANDARD DETAILS AND NOTES
3	EXISTING CONDITIONS AND REMOVAL PLAN
4	ALLEY MILLING PLAN
5	SITE PLAN
6	PROPOSED ALLEY HMA OVERLAY
7	GRADING PLAN

# CITY OF GRAND HAVEN BEECHTREE CORRIDOR PARKING LOT GRAND HAVEN, MI

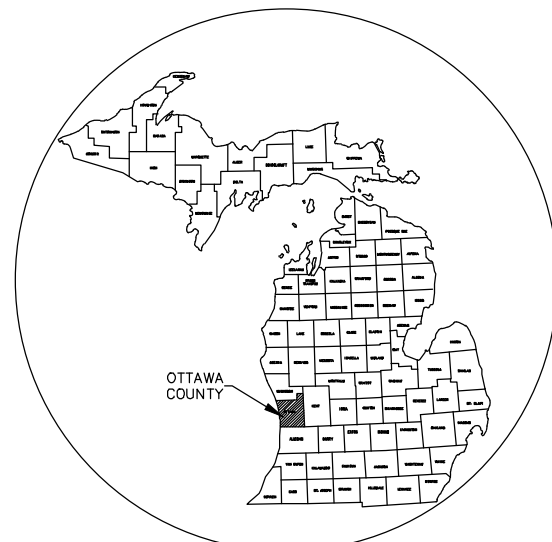
### MDOT STANDARD PLANS

R-28-K*	CURB RAMP AND DETECTABLE WARNING DETAILS
R-29-J*	DRIVEWAY OPENINGS & APPROACHES, AND CONCRETE SIDEWALKS
R-82-D	BEDDING AND FILLING AROUND PIPE CULVERTS
R-83-C	UTILITY TRENCHES
R-86-E	PRECAST CONCRETE END SECTION FOR PIPE CULVERTS
R-96-E	SOIL EROSION & SEDIMENTATION CONTROL MEASURES

### WORK ZONE DEVICE SPECIAL DETAILS

WZD-100-A*	GROUND DRIVEN SIGN SUPPORTS FOR TEMPORARY SIGNS
WZD-125-E*	TEMPORARY TRAFFIC CONTROL DEVICES

\* DENOTES SPECIAL DETAIL



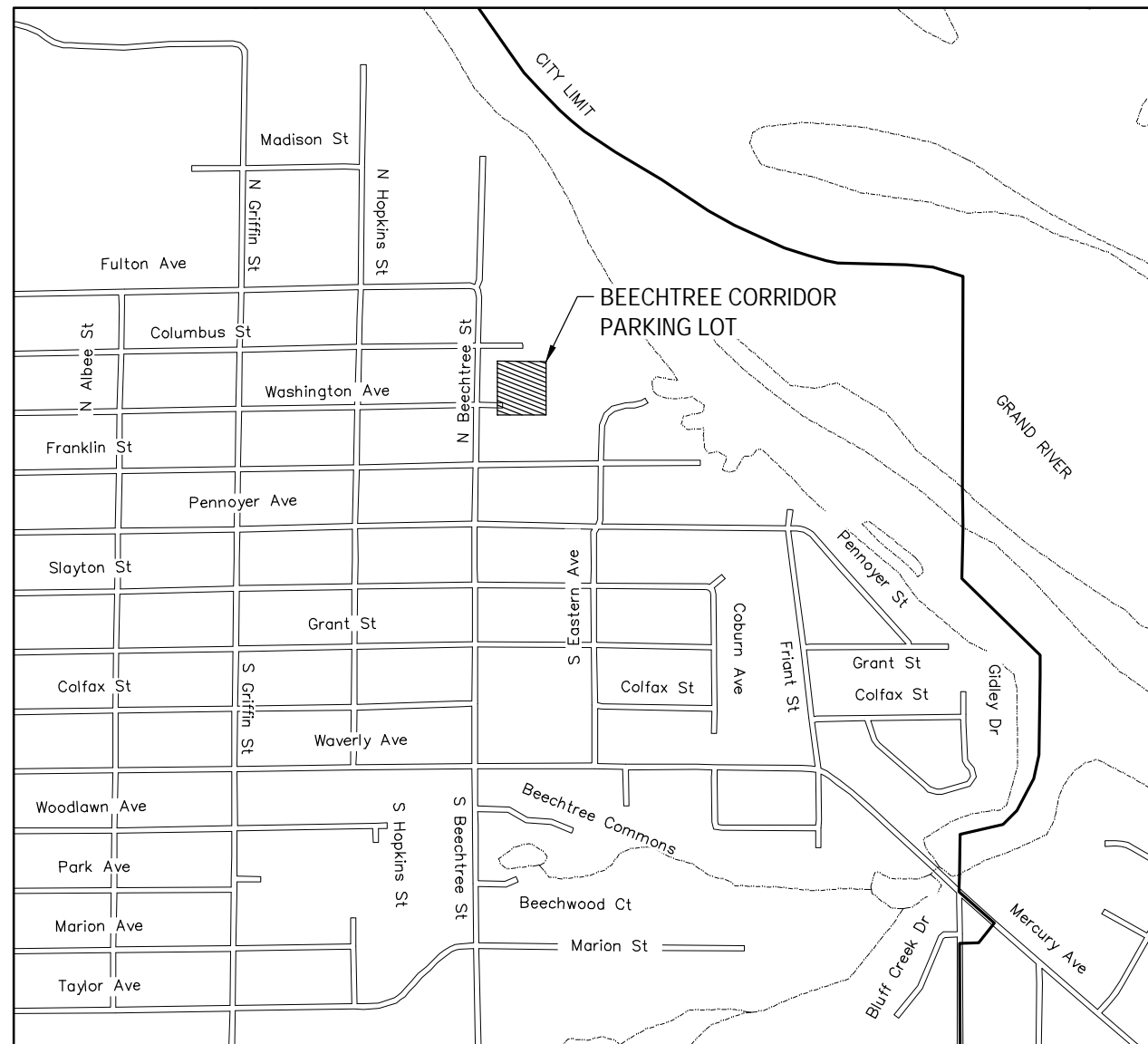
### COUNTY KEY

### CITY OF GRAND HAVEN OFFICIALS

MAYOR	BOB MONETZA
MAYOR PRO-TEM	KEVIN MCLAUGHLIN
COUNCILMEMBER	KEVIN MCLAUGHLIN
COUNCILMEMBER	MIKE FRITZ
COUNCILMEMBER	KAREN LOWE
COUNCILMEMBER	VACANT
CITY MANAGER	ASHLEY LATSCH
PUBLIC WORKS DIRECTOR	DEREK GAJDOS
CLERK	MARIA BOERSMA

THE IMPROVEMENTS COVERED BY THESE PLANS SHALL BE DONE IN ACCORDANCE WITH:

- MICHIGAN DEPARTMENT OF TRANSPORTATION, 2020 STANDARD SPECIFICATIONS FOR CONSTRUCTION AND SUPPLEMENTAL SPECIFICATIONS.
- AASHTO, A POLICY ON GEOMETRIC DESIGN OF HIGHWAYS AND STREETS, 2018 EDITION AS AMENDED.
- MICHIGAN MANUAL OF UNIFORM TRAFFIC CONTROL DEVICES (MMUTCD), 2011 EDITION AS AMENDED.



### PROJECT LOCATION MAP

NOT TO SCALE

### LOCAL UTILITIES

#### SEWER & WATER

CITY OF GRAND HAVEN PUBLIC WORKS  
1120 JACKSON STREET  
GRAND HAVEN, MI 49417  
MIKE ENGLAND  
(616) 847-3493

#### ELECTRIC:

GRAND HAVEN BOARD OF LIGHT AND POWER  
1700 EATON DRIVE  
GRAND HAVEN, MI 49417  
ROBERT SHELLEY  
(616) 607-1263

#### CABLE:

CHARTER COMMUNICATIONS  
1433 FULTON ST  
GRAND HAVEN, MI 49417  
BRAD KULICAMP  
(616) 607-2356

#### GAS:

MICHIGAN GAS  
1708 EATON DRIVE  
GRAND HAVEN, MI 49417  
TODD SUBKA  
(616) 844-7519

#### TELEPHONE:

AT&T  
245 EAST 24TH STREET  
HOLLAND, MI 49423  
RICK ARENSEN  
(616) 392-7017

#### PIPELINE:

WOLVERINE PIPE LINE COMPANY  
8075 CREEKSIDE DRIVE, SUITE 210  
PORTAGE, MI 49024  
DUNCAN MACLEOD  
(616) 916-0055

#### FIBER:

COMCAST  
RACHEL GENTRY  
(248) 514-8613  
RACHEL\_GENTRY@COMCAST.NET

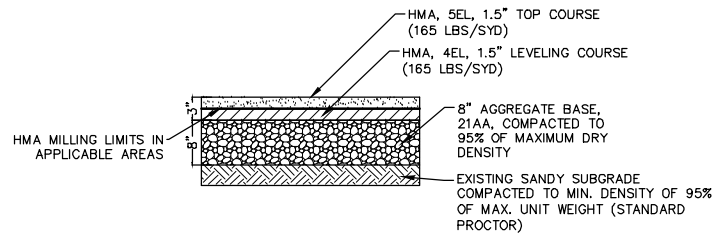
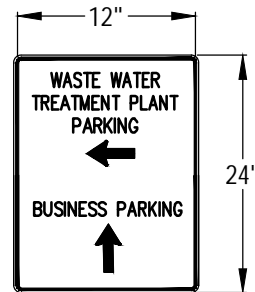


Know what's below.  
**Call before you dig.**

### CALL MISS DIG

FOR PROTECTION OF THE UNDERGROUND UTILITIES, THE CONTRACTOR SHALL CALL MISS DIG A MINIMUM OF THREE FULL WORKING DAYS, EXCLUDING SATURDAYS, SUNDAYS, AND HOLIDAYS PRIOR TO BEGINNING CONSTRUCTION OPERATIONS. MEMBERS WILL THUS BE ROUTINELY NOTIFIED. THIS DOES NOT RELIEVE THE CONTRACTOR OF THE RESPONSIBILITY OF NOTIFYING UTILITY OWNERS WHO MAY NOT BE PART OF THE "MISS DIG" ALERT SYSTEM.

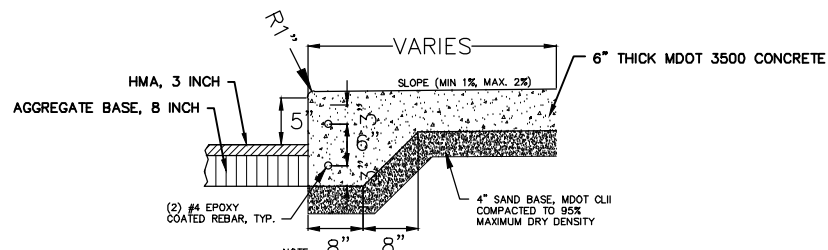




**HMA PAVEMENT CROSS SECTION**  
NOT TO SCALE

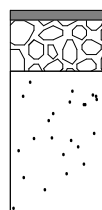
HMA APPLICATION TABLE					
PAY ITEM	IDENT. NO.	MIXTURE	RATE (LBS/SYD)	PERFORMANCE GRADE	TYPE
HMA, 5EL	T-1	5EL	165	64 - 28	WEARING COURSE (AW=220)
HMA, 4EL	L-1	4EL	165	64 - 28	LEVELING COURSE
HAND PATCHING	HP	5EL	330 (2 LIFTS)	64 - 28	HAND PATCHING

NOTE: APPLY HMA BOND COAT BETWEEN HMA LIFTS AT A RATE OF 0.05 TO 0.15 GAL/SYD (NOT A PAY ITEM)



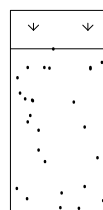
**SIDEWALK THICKENED EDGE, 6 INCH**  
NOT TO SCALE

**CORING LOG #1**



HMA SURFACE (3 INCHES)  
(0.00' - 0.25')  
AGGREGATE BASE (13 INCHES)  
(0.25' - 1.33')  
SAND SUBGRADE (44 INCHES)  
(1.33' - 5.00')

**CORING LOG #2**



TOP SOIL (12 INCHES)  
(0.00' - 1.00')  
SAND SUBGRADE (48 INCHES)  
(1.00' - 5.00')

**STANDARD LEGEND**

- CB ○ = CATCH BASIN
- CB □ = CURB CATCH BASIN
- EMH = ELECTRIC MANHOLE
- ⊗ W = ELECTRIC METER
- ⊕ = FIRE HYDRANT
- FIP = FOUND IRON PIPE
- FIR = FOUND IRON ROD
- ⊙ G = GAS LOCATION
- GMH = GAS MANHOLE
- ⊗ G = GAS METER
- ⊗ G = GAS VALVE
- MH = GENERAL MANHOLE
- = GUY WIRE
- ∅ LP = LIGHT POLE
- = MAIL BOX
- ∅ PP = POWER POLE
- ∅ PP/D = POWER POLE W/DROP
- CO = SANITARY CLEANOUT
- SMH = SANITARY MANHOLE
- SIR = SET IRON ROD
- STMH = STORM MANHOLE
- ⊕ = STREET SIGN
- ⊙ T = TELEPHONE LOCATION
- TMH = TELEPHONE MANHOLE
- ⊙ T = TELEPHONE PEDESTAL
- ∅ TP = TELEPHONE POLE
- ⊙ = TRAFFIC SIGN
- ∅ UP = UTILITY POLE
- ∅ UP/D = UTILITY POLE W/DROP
- ∅ UP/L = UTILITY POLE W/STREET LIGHT
- ⊗ CS = WATER CURB STOP
- ⊗ W = WATER METER
- ⊗ W = WATER VALVE
- = EXISTING WATER MAIN
- >> — = EXISTING SANITARY SEWER
- > — = EXISTING STORM SEWER
- · — = OVERHEAD UTILITIES
- — — = GAS MAIN/LINE
- — — = BURIED TELEPHONE
- — — = BURIED FIBER OPTIC
- — — = ELECTRICAL
- — ○ = CHAINLINK FENCE
- X — X — = WIRE FENCE
- □ — □ — = WOOD FENCE
- WS — = PROP WATER SERVICE
- SS — = PROP SANITARY SERVICE
- R/W — R/W — = RIGHT OF WAY

**GENERAL NOTES:**

MDOT STANDARD SPECIFICATIONS FOR CONSTRUCTION, 2020 EDITION SHALL PREVAIL, UNLESS INDICATED OTHERWISE.  
AT LEAST THREE WORKING DAYS PRIOR TO CONSTRUCTION THE CONTRACTOR SHALL REQUEST THE LOCATIONS OF ALL UTILITIES BY CALLING MISS DIG. REGARDLESS OF DURATION, NO WORK SHALL COMMENCE UNTIL THE MISS DIG REQUEST HAS CLEARED.

A MINIMUM OF 18" VERTICAL CLEARANCE IS REQUIRED WHERE:  
A. WATER MAIN AND SANITARY SEWER CROSS  
B. WATER MAIN AND STORM SEWER CROSS  
C. STORM AND SANITARY SEWER CROSS UNLESS OTHERWISE SPECIFIED.

ANY EXCESS/UNSUITABLE MATERIAL SHALL BECOME THE PROPERTY OF THE CONTRACTOR AND THEY SHALL BE RESPONSIBLE FOR THE PROPER DISPOSAL OF THIS MATERIAL.

DEWATERING, IF REQUIRED, SHALL BE THE RESPONSIBILITY OF THE CONTRACTOR AND NO EXTRA PAYMENT SHALL BE MADE THEREFORE.

ALL EXISTING FEATURES AND IMPROVEMENTS (INCLUDING TREES, LANDSCAPING, ETC) NOT DESIGNATED FOR REMOVAL SHALL BE PROTECTED BY THE CONTRACTOR. ALL TREES DAMAGED BEYOND SAVING, AS DETERMINED BY THE ENGINEER, SHALL BE REMOVED AND REPLACED WITH A NURSERY GROWN TREE AS SPECIFIED BY THE ENGINEER.

REMOVED MANHOLE FRAMES AND COVERS SHALL BECOME THE PROPERTY OF THE CITY AND SHALL BE STOCKPILED ON SITE FOR PICKUP BY THE CITY.

REMOVAL OF ABANDONED CONFLICTING UTILITIES SHALL BE CONSIDERED INCLUDED WITH THE ITEM BEING CONSTRUCTED.

PAY ITEM "DR STRUCTURE, REM" SHALL INCLUDE REMOVAL OF MANHOLES FOR ANY TYPE OF UTILITY.

FITTINGS, PIPE EXTENSIONS, AND APPURTENANCES NECESSARY TO CONNECT EXISTING PIPES TO PROPOSED MANHOLES, SHALL BE INCLUDED IN THE UNIT PRICE FOR THE PROPOSED STRUCTURE.

**ROADWAY:**

BACKFILL MATERIAL WITHIN THE ZONE OF INFLUENCE OF A ROADWAY SHALL BE CLASS II SAND COMPACTED TO A MINIMUM OF 95% OF MAXIMUM DRY DENSITY IN 12" MAXIMUM LIFTS.

PAVEMENT DESIGNATED FOR REMOVAL SHALL BE SAWCUT FULL DEPTH AT REMOVAL LIMITS PRIOR TO REMOVAL. THE CONTRACTOR SHALL CONSTRUCT TEMPORARY RAMPS AND/OR SECONDARY SAWCUTS IN ORDER TO PROVIDE A NEAT JOINT BETWEEN EXISTING AND PROPOSED PAVEMENT. NO EXTRA PAYMENT WILL BE MADE FOR ADDITIONAL SAWCUTTING WORK OR PAVEMENT REMOVAL BEYOND THE REMOVAL LIMITS IN ORDER TO ADDRESS DETERIORATION OF EXISTING PAVEMENT DUE TO TRAFFIC EXPOSURE DURING CONSTRUCTION.

Item Description	Unit	Sht 2 Quantity
Mobilization, Max \$25,000	LSUM	1
Subgrade Undercutting, Type II	Cyd	50
Erosion Control, Inlet Protection, Fabric Drop	Ea	5
Erosion Control, Silt Fence	Ft	500
Utility Relocation Allowance	Dlr	10,000
Temporary Traffic Control	LSUM	1

**ABONMARCHÉ**  
 95 West Main Street  
 Benton Harbor, MI 49023  
 T 269.927.2295  
 F 269.927.1017  
 abonmarche.com  
 Hobart  
 Kalamazoo  
 Lafayette  
 Goshen  
 Grand Haven  
 Grand Rapids  
 Valparaiso  
 Engineering Architecture Land Surveying  
 COPYRIGHT 2024 - ABONMARCHÉ CONSULTANTS, INC.

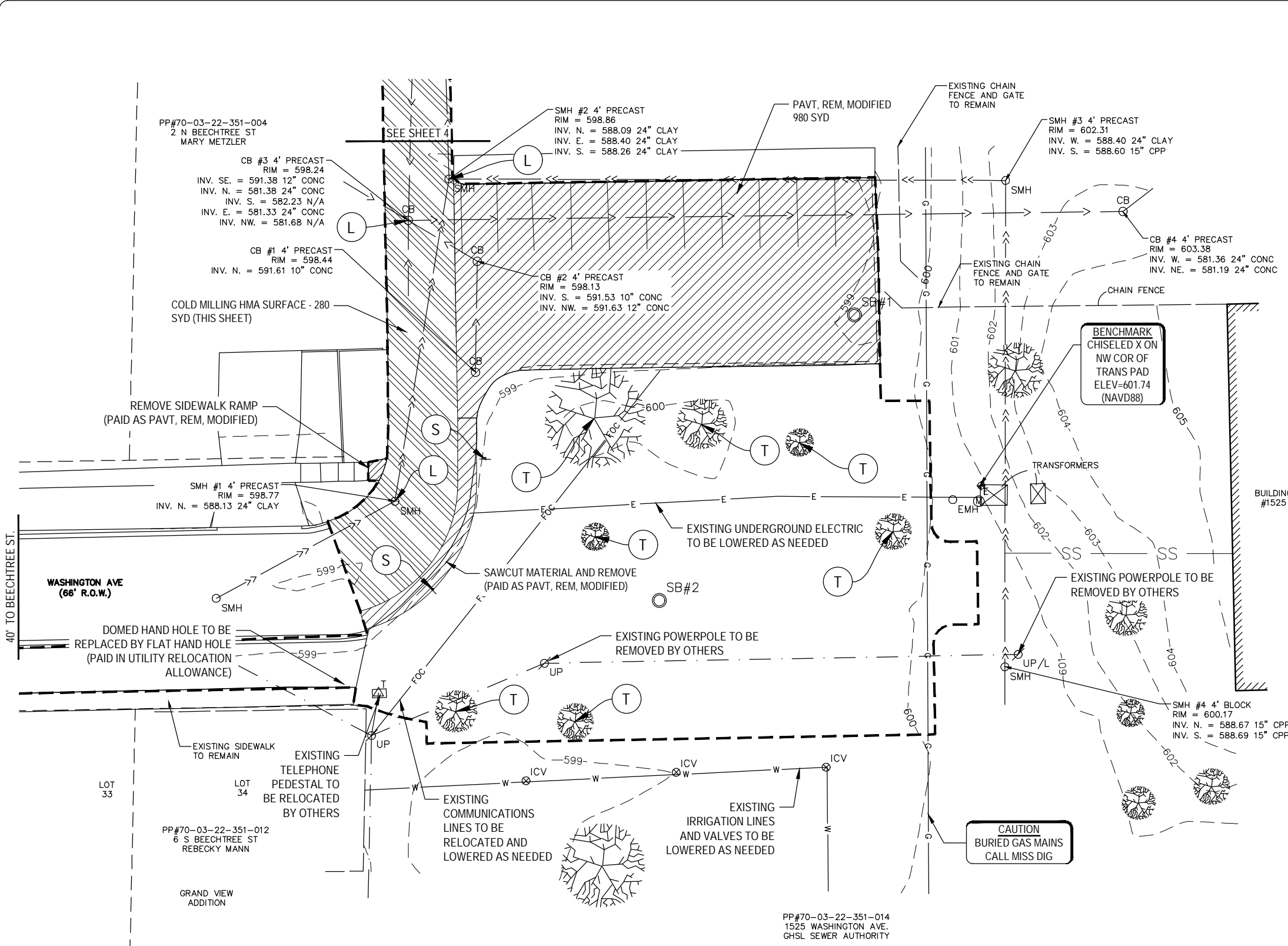
**CITY OF GRAND HAVEN**  
**BEECHTREE CORRIDOR**  
**PARKING LOT**  
**OTTAWA COUNTY, MI.**

**STANDARD DETAILS**  
**AND NOTES**

PROJECT: CITY OF GRAND HAVEN BEECHTREE CORRIDOR PARKING LOT OTTAWA COUNTY, MI.  
 SHEET TITLE: STANDARD DETAILS AND NOTES  
 DRAWN BY: CES  
 DESIGNED BY: ML/DWB  
 PM REVIEW: LNB  
 QA/QC REVIEW: TRD  
 DATE: JANUARY 2025  
 SCALE: HORZ: NTS VERT: NTS  
 ACI JOB #: 24-1771  
 SHEET NO. 24-1771

1	ADVERTISED FOR BIDDING	LNB	1-15-2025
NO.	REVISION DESCRIPTION:	BY:	DATE:

O:\Projects\2024\24-1771 Grand Haven Beechtree Corridor Parking Lot\Drawings\24-1771 BS FT.dwg, 1/13/2025 2:49:29 PM, AutoCAD PDF (General Documentation).pc3



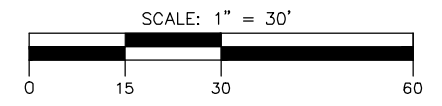
Item Description	Unit	Sht 3 Quantity
Stump, Rem, 19 inch to 36 inch	Ea	2
Stump, Rem, 37 inch or Larger	Ea	1
Stump, Rem, 6 inch to 18 inch	Ea	4
Pavt, Rem, Modified	Syd	700
Dr Structure, Temp Lowering	Ea	3
Cold Milling HMA Surface	Syd	280
Sign, Type III, Rem	Ea	2

NOTES:

- REMOVAL OF HMA WEDGE CURB SHALL BE INCLUDED IN "PAVT, REM, MODIFIED"
- SAWCUT MATERIAL SHALL BE INCLUDED IN "PAVT, REM, MODIFIED"
- MATERIAL AND LABOR COSTS BORNE BY THE CONTRACTOR TO RELOCATE OR INCREASE DEPTH OF CONFLICTING UTILITY LINES SHALL BE PAID UNDER THE "UTILITY RELOCATION ALLOWANCE"

LEGEND

PAVT, REM, MODIFIED  
 COLD MILLING HMA SURFACE  
 PROJECT LIMITS  
 STUMP, REM  
 SIGN, TYPE III, REM  
 DR STRUCTURE, TEMP LOWERING



**ABONMARCHÉ**

11 North 6th Street  
Grand Haven, MI 49417  
T 616.847.4070  
abonmarche.com

Benton Harbor  
Grand Haven  
Grand Rapids  
Kalamazoo  
Lafayette

South Bend  
Goshen  
Valparaiso  
Hobart  
Ft. Wayne

Engineering - Architecture - Land Surveying  
COPYRIGHT 2024 - ABONMARCHÉ CONSULTANTS, INC.

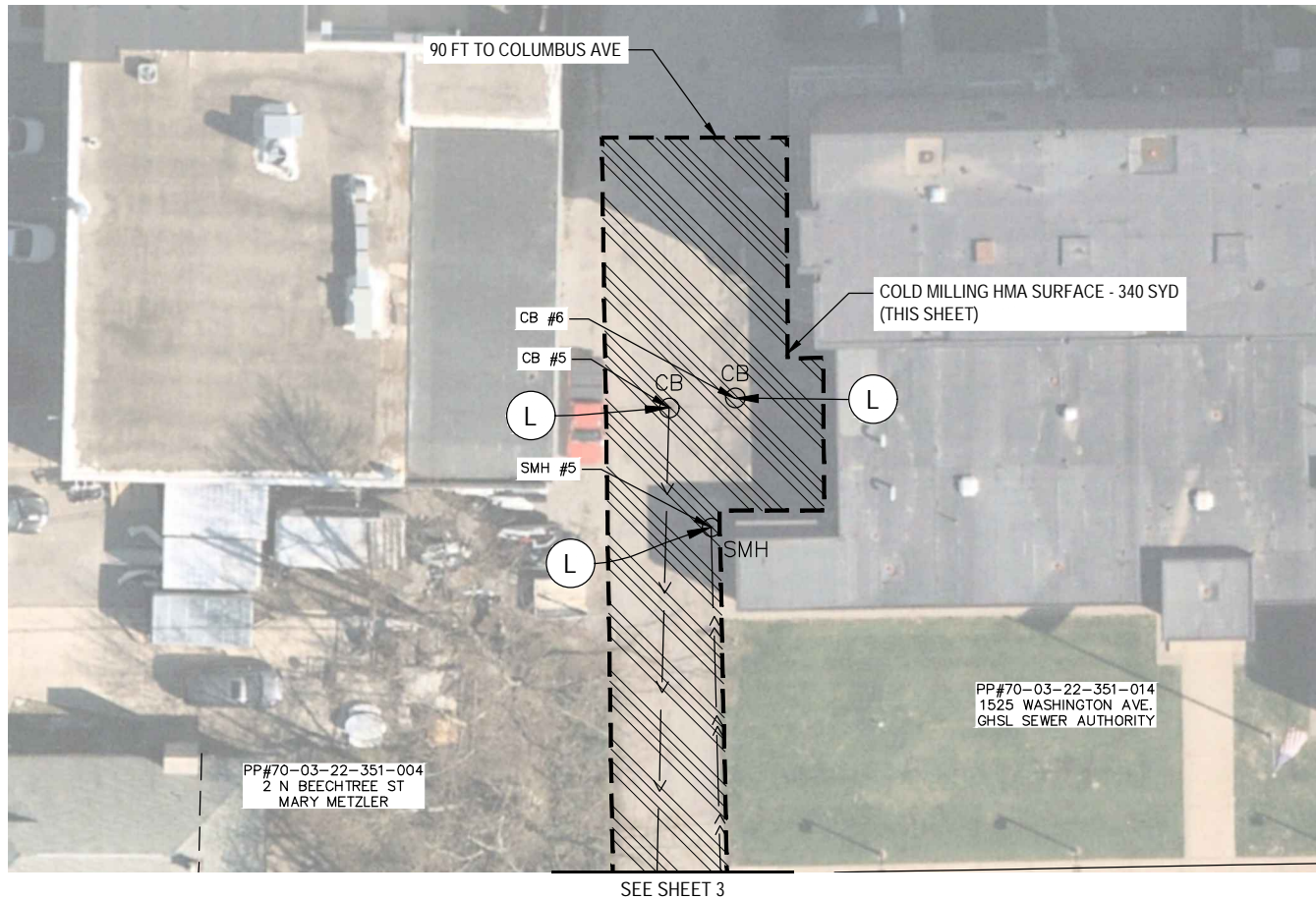
PROJECT:  
CITY OF GRAND HAVEN  
BEECHTREE CORRIDOR  
PARKING LOT  
OTTAWA COUNTY, MI.

SHEET TITLE:  
EXISTING CONDITIONS  
AND REMOVAL PLAN

DRAWN BY: CES  
DESIGNED BY: ML/DWB  
PM REVIEW: LNB  
QA/QC REVIEW: TRD  
DATE: JANUARY 2025  
SCALE: HORZ: 1"=30'  
VERT: N/A  
ACI JOB #: 24-1771

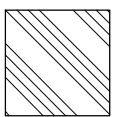


1	ADVERTISED FOR BIDDING	LNB	1-15-2025
NO.	REVISION DESCRIPTION:	BY:	DATE:

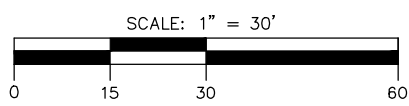
O:\Projects\2024\24-1771 Grand Haven Beechtree Corridor Parking Lot\CAD\CivilDrawings\24-1771 BS FT.dwg, 1/13/2025 2:49:30 PM, AutoCAD PDF (General Documentation).pc3



Item Description	Unit	Sht 4 Quantity
Dr Structure, Temp Lowering	Ea	3
Cold Milling HMA Surface	Syd	340

**LEGEND**

	COLD MILLING HMA SURFACE
	PROJECT LIMITS
	DR STRUCTURE, TEMP LOWERING



1	ADVERTISED FOR BIDDING	LNB	1-15-2025
NO.	REVISION DESCRIPTION:	BY:	DATE:

**ABONMARCHÉ**

11 North 6th Street  
Grand Haven, MI 49417  
T 616.847.4070  
abonmarche.com

South Bend  
Goshen  
Valparaiso  
Hobart  
Ft. Wayne

Benton Harbor  
Grand Haven  
Grand Rapids  
Kalamazoo  
Lafayette

ENGINEERING - ARCHITECTURE - LAND SURVEYING

PROJECT:

**CITY OF GRAND HAVEN  
BEECHTREE CORRIDOR  
PARKING LOT  
OTTAWA COUNTY, MI.**

SHEET TITLE:

**ALLEY MILLING PLAN**

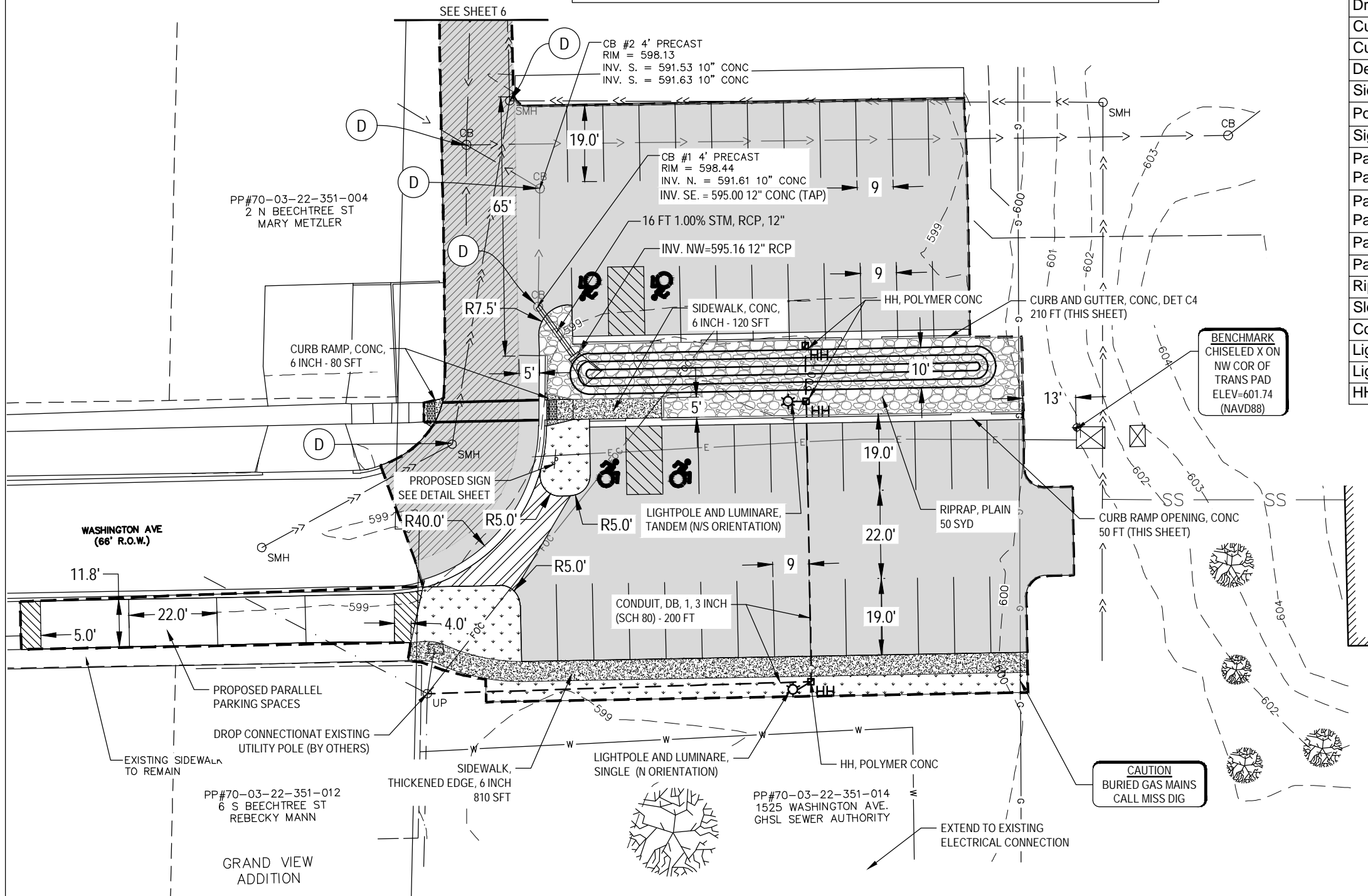
DRAWN BY: CES  
DESIGNED BY: ML/DWB  
PM REVIEW: LNB  
QA/QC REVIEW: TRD  
DATE: JANUARY 2025  
SCALE: HORZ: 1"=30'  
VERT: N/A  
ACI JOB #: 24-1771

SHEET NO. 4 of 7

**NOTE:**

1. LOCATION OF SIGNS AND SIGN POSTS WILL BE DETERMINED IN THE FIELD AT THE DISCRETION OF THE OWNER AND ENGINEER
2. ON-SITE SAND CAN BE RE-USED AS SUBBASE. NO ADDITIONAL PAYMENT FOR IMPORTED SAND WILL BE PROVIDED
3. ALL RIP RAP SHALL BE NATURAL STONE, BROKEN CONCRETE WILL NOT BE ACCEPTED

LEGEND					
	PROPOSED ADA TACTILE WARNING AREA		SIDEWALK, CONC, 6 INCH		RIPRAP, PLAIN
	PROPOSED HMA PAVEMENT		DRIVEWAY, NONREINF CONC, 6 INCH		SLOPE RESTORATION, NON-FREEWAY, TYPE E
	PROPOSED HMA PAVEMENT (1.5" RESURFACE)		DR STRUCTURE COVER, ADJ, CASE 1		PROJECT LIMITS



Item Description	Unit	Sht 5 Quantity
Aggregate Base, 8 inch	Syd	1660
Culv End Sect, Conc, 12 inch	Ea	1
Sewer, CI IV, 12 inch, Tr Det B	Ft	20
Dr Structure Cover, Adj, Case 1	Ea	5
Dr Structure, Tap, 12 inch	Ea	1
HMA, 4EL	Ton	150
HMA, 5EL	Ton	175
Driveway, Nonreinf Conc, 6 inch	Syd	35
Curb and Gutter, Conc, Det C4	Ft	250
Driveway Opening, Conc, Det M	Ft	50
Curb Ramp Opening, Conc	Ft	10
Curb Ramp, Conc, 6 inch	Sft	200
Detectable Warning Surface, Cast Iron	Ft	10
Sidewalk, Thickened Edge, 6 inch	Sft	810
Post, Steel, 3 lb	Ft	15
Sign, Type IIIB	Sft	5
Pavt Mrkg, Waterborne, for Rest Areas, Parks, & Lots, 4 inch, Blue	Ft	325
Pavt Mrkg, Waterborne, for Rest Areas, Parks, & Lots, 4 inch, White	Ft	1110
Pavt Mrkg, Waterborne, 6 inch, Crosswalk	Ft	55
Pavt Mrkg, Waterborne, Accessible Sym	Ea	4
Riprap, Plain	Syd	250
Slope Restoration, Non-Freeway, Type E	Syd	150
Conduit, DB, 1, 3 inch	Ft	200
Light Pole and Luminaire, Tandem	Ea	1
Light Pole and Luminaire, Single	Ea	1
HH, Polymer Conc	Ea	3

**ABONMACHE**

11 North 6th Street  
Grand Haven, MI 49417  
T 616.847.4070  
abonmache.com

Benton Harbor  
Grand Haven  
Grand Rapids  
Kalamazoo  
Lafayette

South Bend  
Goshen  
Valparaiso  
Hobart  
Ft. Wayne

Engineering - Architecture - Land Surveying

**CITY OF GRAND HAVEN  
BEECHTREE CORRIDOR  
PARKING LOT  
OTTAWA COUNTY, MI.**

**SITE PLAN**

SHEET TITLE:

DRAWN BY: CES

DESIGNED BY: ML/DWB

PM REVIEW: LNB

QA/QC REVIEW: TRD

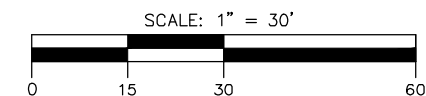
DATE: JANUARY 2025

SCALE: HORZ: 1"=30'  
VERT: N/A

ACJOB # 24-1771

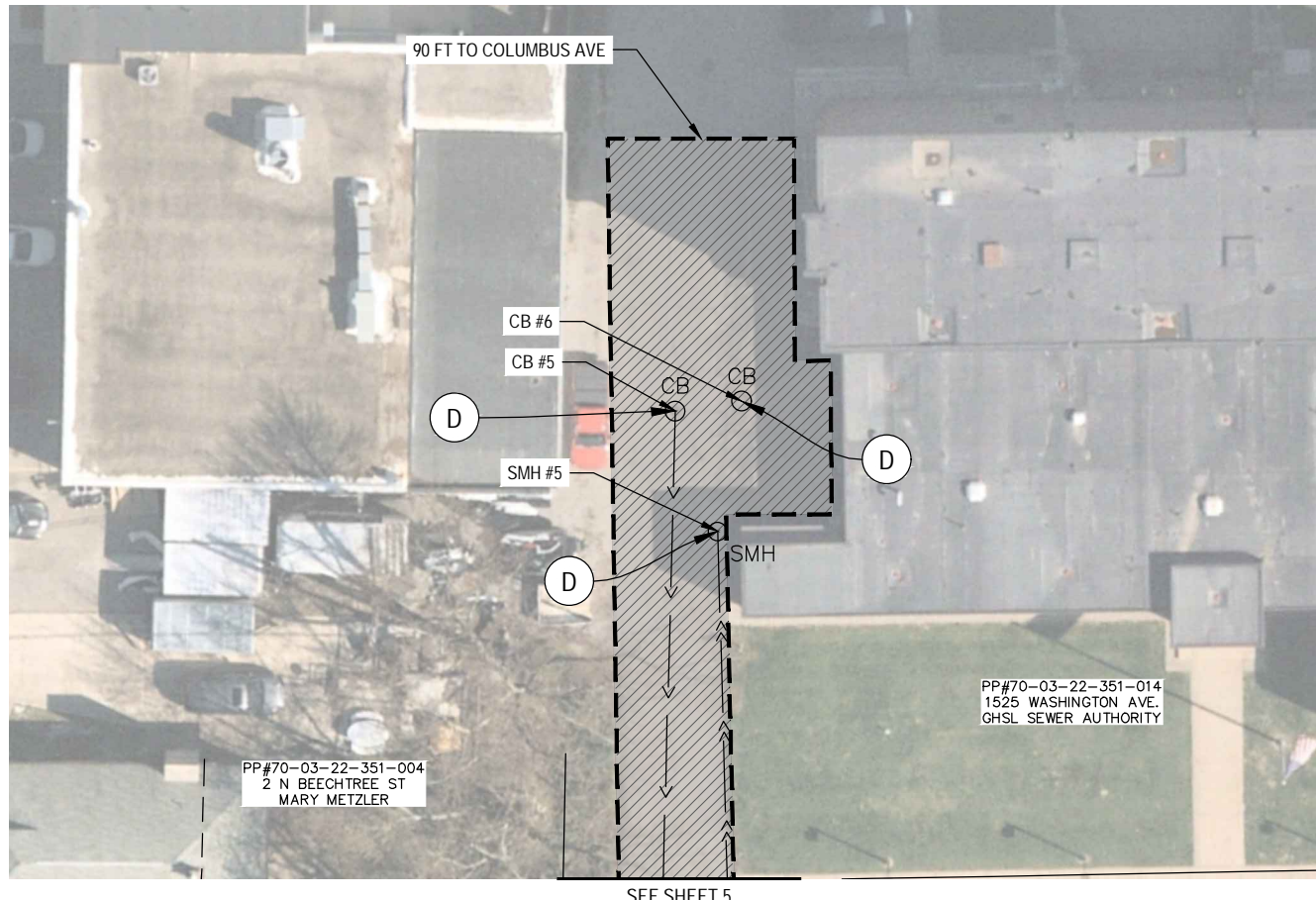
SHEET NO. 5 of 7

1	ADVERTISED FOR BIDDING	LNB	1-15-2025
NO.	REVISION DESCRIPTION:	BY:	DATE:



O:\Projects\2024\24-1771 Grand Haven Beechtree Corridor Parking Lot\CAD\Civil\Drawings\24-1771 SITE IFT.dwg, 1/13/2025 2:49:31 PM, AutoCAD PDF (General Documentation).pc3

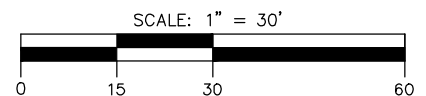
O:\Projects\2024\24-1771 Grand Haven Beechtree Corridor Parking Lot\CAD\Civil\Drawings\24-1771 SITE IFT.dwg, 1/13/2025 2:49:32 PM, AutoCAD PDF (General Documentation).pc3



Item Description	Unit	Sht 6 Quantity
Dr Structure Cover, Adj, Case 1	Ea	3
HMA, 5EL	Ea	25

**LEGEND**

- PROPOSED HMA PAVEMENT (1.5" RESURFACE)
- PROJECT LIMITS
- DR STRUCTURE COVER, ADJ, CASE 1



1	ADVERTISED FOR BIDDING	LNB	1-15-2025
NO.	REVISION DESCRIPTION:	BY:	DATE:

**ABONMARCHÉ**

11 North 6th Street  
Grand Haven, MI 49417  
T 616.847.4070  
abonmarche.com

South Bend  
Goshen  
Valparaiso  
Hobart  
Ft. Wayne

Benton Harbor  
Grand Haven  
Grand Rapids  
Kalamazoo  
Lafayette

Engineering - Architecture - Land Surveying  
COPYRIGHT 2024 - ABONMARCHÉ CONSULTANTS, INC.

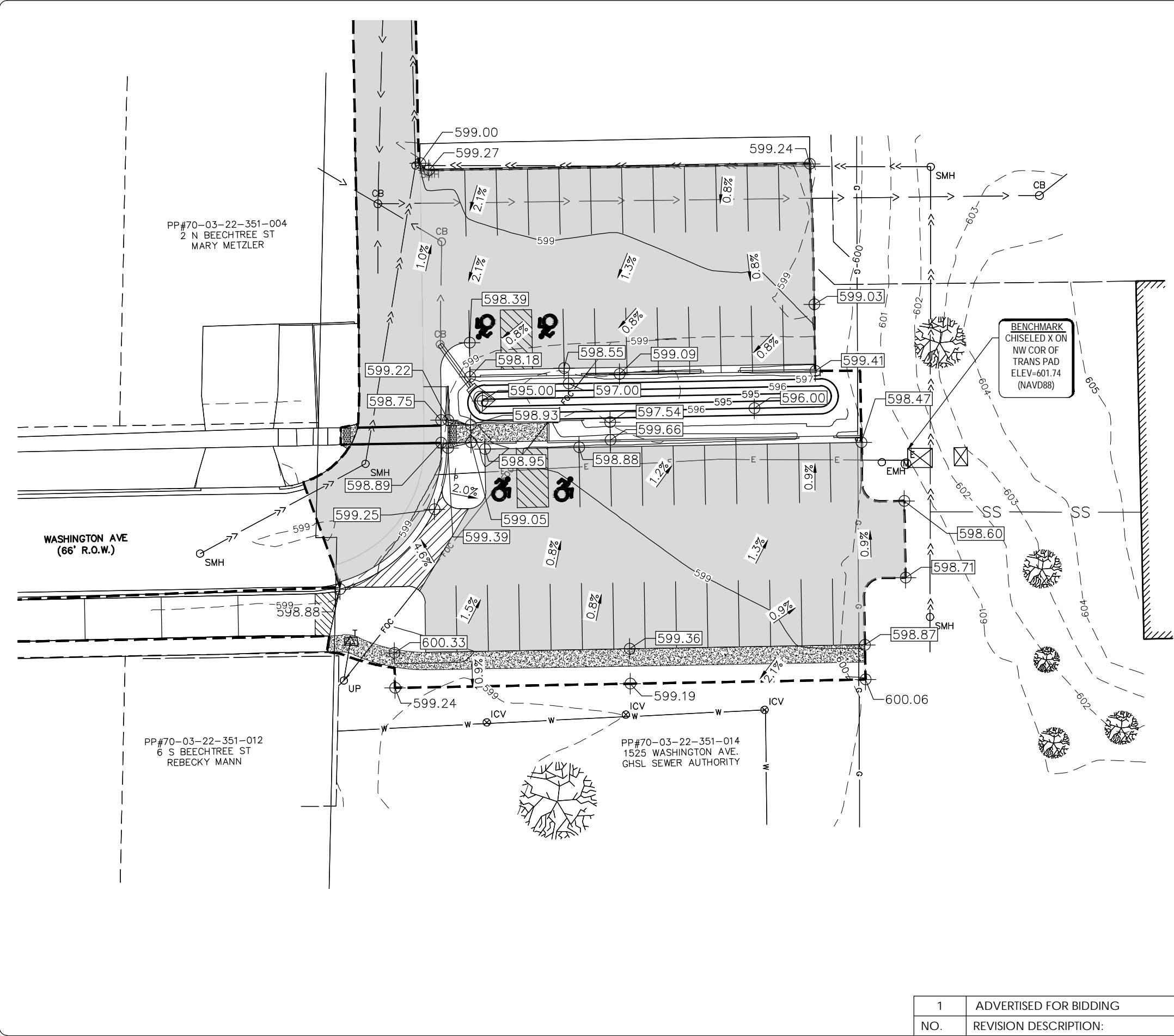
PROJECT:  
CITY OF GRAND HAVEN  
BEECHTREE CORRIDOR  
PARKING LOT  
OTTAWA COUNTY, MI.

SHEET TITLE:  
PROPOSED ALLEY  
HMA OVERLAY

DRAWN BY: CES  
DESIGNED BY: ML/DWB  
PM REVIEW: LNB  
QA/QC REVIEW: TRD  
DATE: JANUARY 2025  
SCALE: HORZ: 1"=30'  
VERT: N/A  
ACI JOB # 24-1771

SHEET NO. 6 of 7

O:\Projects\2024\24-1771 Grand Haven Beechtree Corridor Parking Lot\CAD\CivilDrawings\24-1771 GRADING - IFT.dwg, 1/13/2025 2:49:40 PM, AutoCAD PDF (General Documentation).pc3



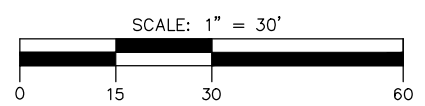
Item Description	Unit	Sht 5 Quantity
Excavation, Earth	Cyd	750
Site Grading	LSUM	1

**NOTE:**

- OFFSITE HAUL OF EXCAVATED MATERIAL NEEDED TO ACHIEVE FINAL GRADES SHALL BE PAID FOR AS "EXCAVATION, EARTH". CONTRACTOR SHALL KEEP TRACK OF LOAD TICKETS AND SUBMIT FOR REVIEW BY THE ENGINEER IN ORDER TO RECEIVE PAYMENT UNDER THIS ITEM.
- "SITE GRADING" SHALL INCLUDE ALL TOPSOIL STRIPPING AND LAND SHAPING NEEDED TO ACHIEVE THE FINAL GRADES AS SHOWN ON THE PLANS.

**LEGEND**

- 100.00 X PROPOSED GRADE
- 100.00 X EXISTING GRADE
- PROPOSED HMA PAVEMENT
- PROJECT LIMITS



1	ADVERTISED FOR BIDDING	LNB	1-15-2025
NO.	REVISION DESCRIPTION:	BY:	DATE:

**ABONMARCHÉ**

11 North 6th Street  
Grand Haven, MI 49417  
T 616.847.4070  
abonmarche.com

South Bend  
Grand Haven  
Goshen  
Valparaiso  
Hobart  
Ft. Wayne

Benton Harbor  
Grand Haven  
Grand Rapids  
Kalamazoo  
Lafayette

Engineering - Architecture - Land Surveying

PROJECT:  
CITY OF GRAND HAVEN  
BEECHTREE CORRIDOR  
PARKING LOT  
OTTAWA COUNTY, MI.

GRADING PLAN

SHEET TITLE:  
DRAWN BY: CES  
DESIGNED BY: ML/DWB  
PM REVIEW: LNB  
QA/QC REVIEW: TRD  
DATE: JANUARY 2025  
SCALE:  
HORIZ: 1"=30'  
VERT: N/A  
ACI JOB #  
24-1771

SHEET NO.  
7 of 7