

## Legend

### CBDDA Boundaries

#### Districts

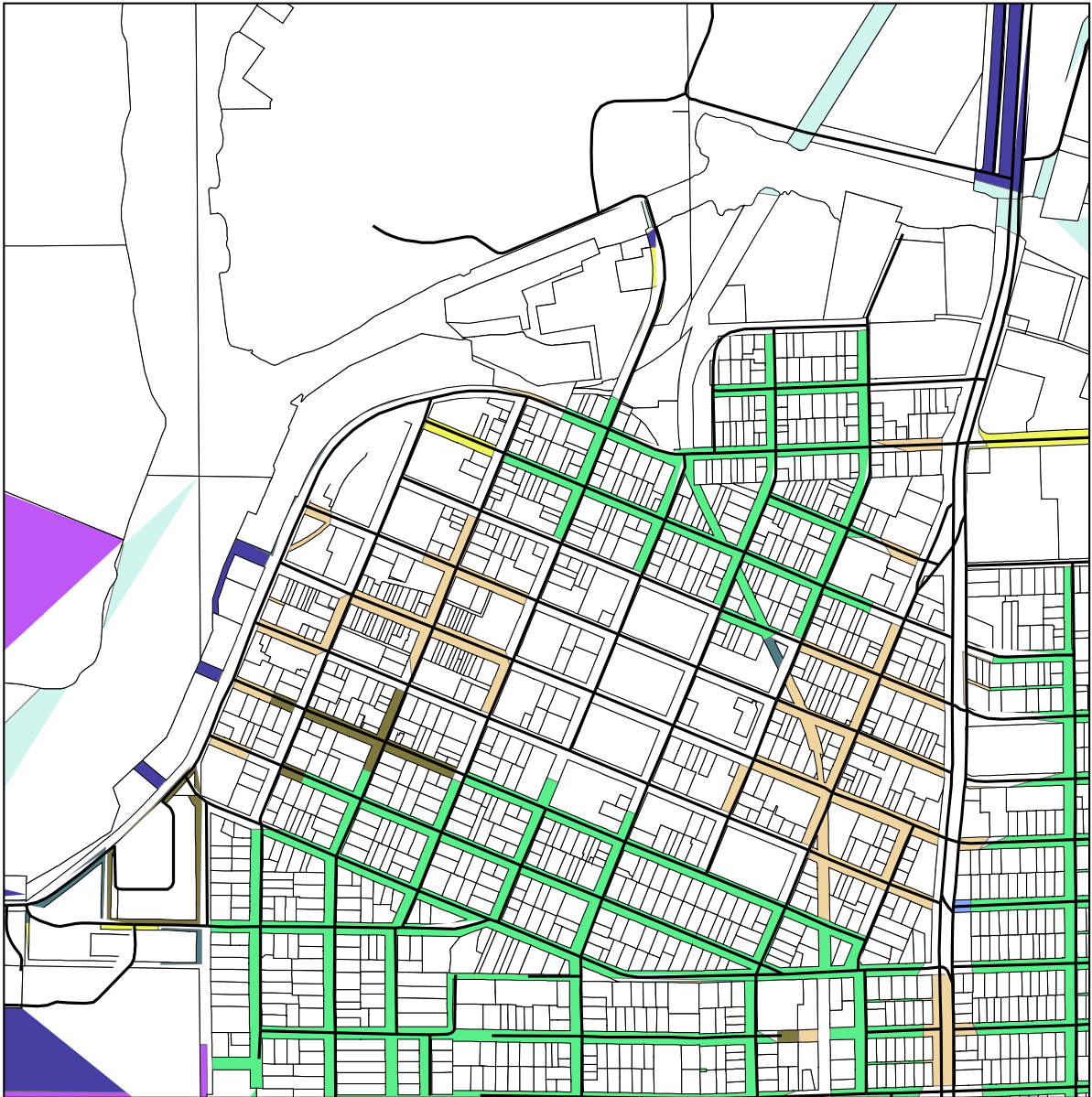
- Centertown
- Downtown
- Hilltop
- Olde Town
- Waterfront

## Map 1

### City of Grand Haven, Michigan Central Business District Development Area Boundaries



November 10, 2004



## Legend

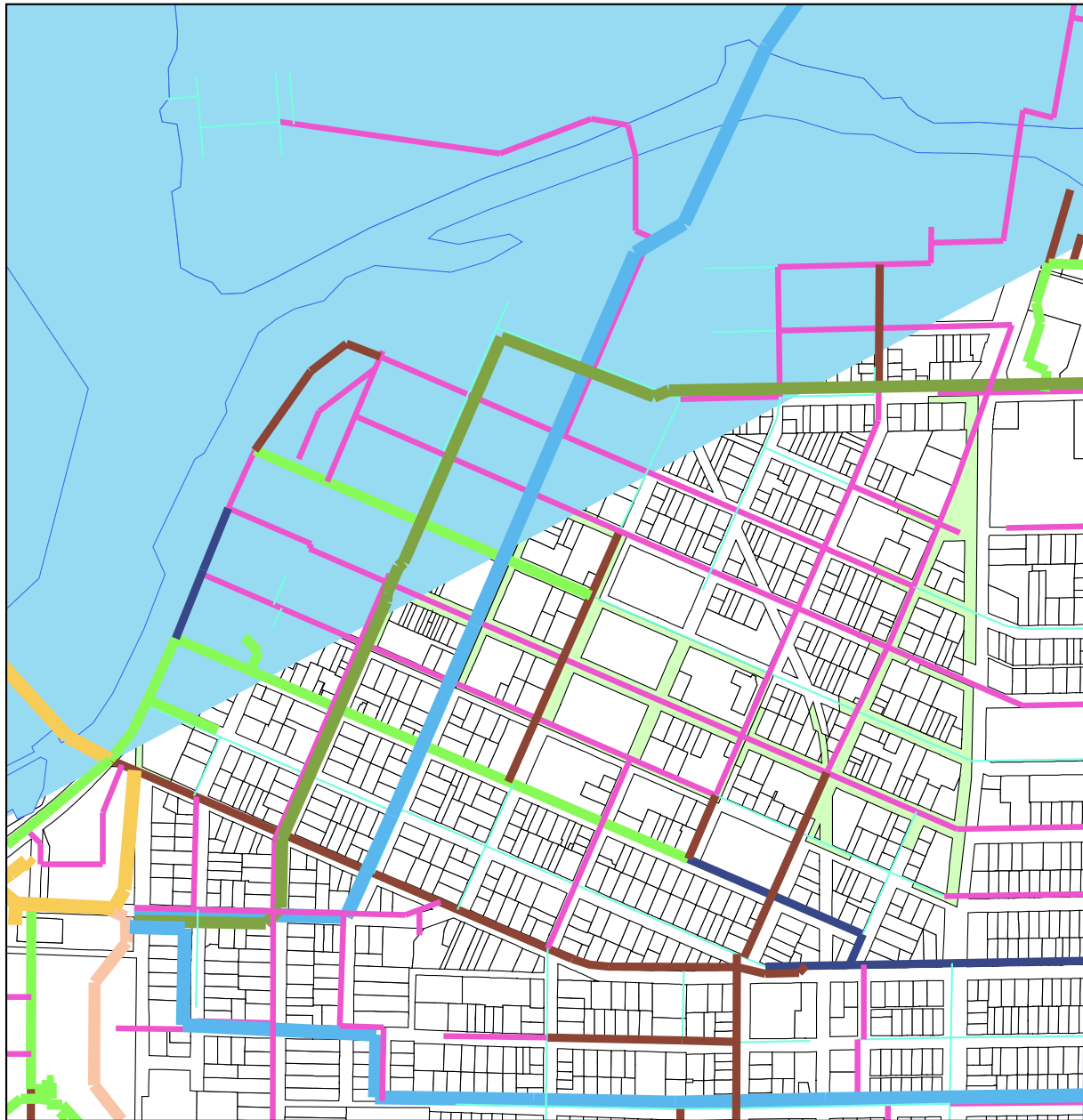
— Roads	Office
□ Parcels	Park
<b>Existing Land Use</b>	Public/Quasi Public
(	Planned Development
Commercial	Single Family Residential
Industrial	Multiple Family Residential
Open Space	Grand River

## Map 2

**Grand Haven, Michigan  
Central Business District Development Area  
Existing Land Use**

November 11, 2004

Source: Ottawa County Geographic Information Services



## Legend

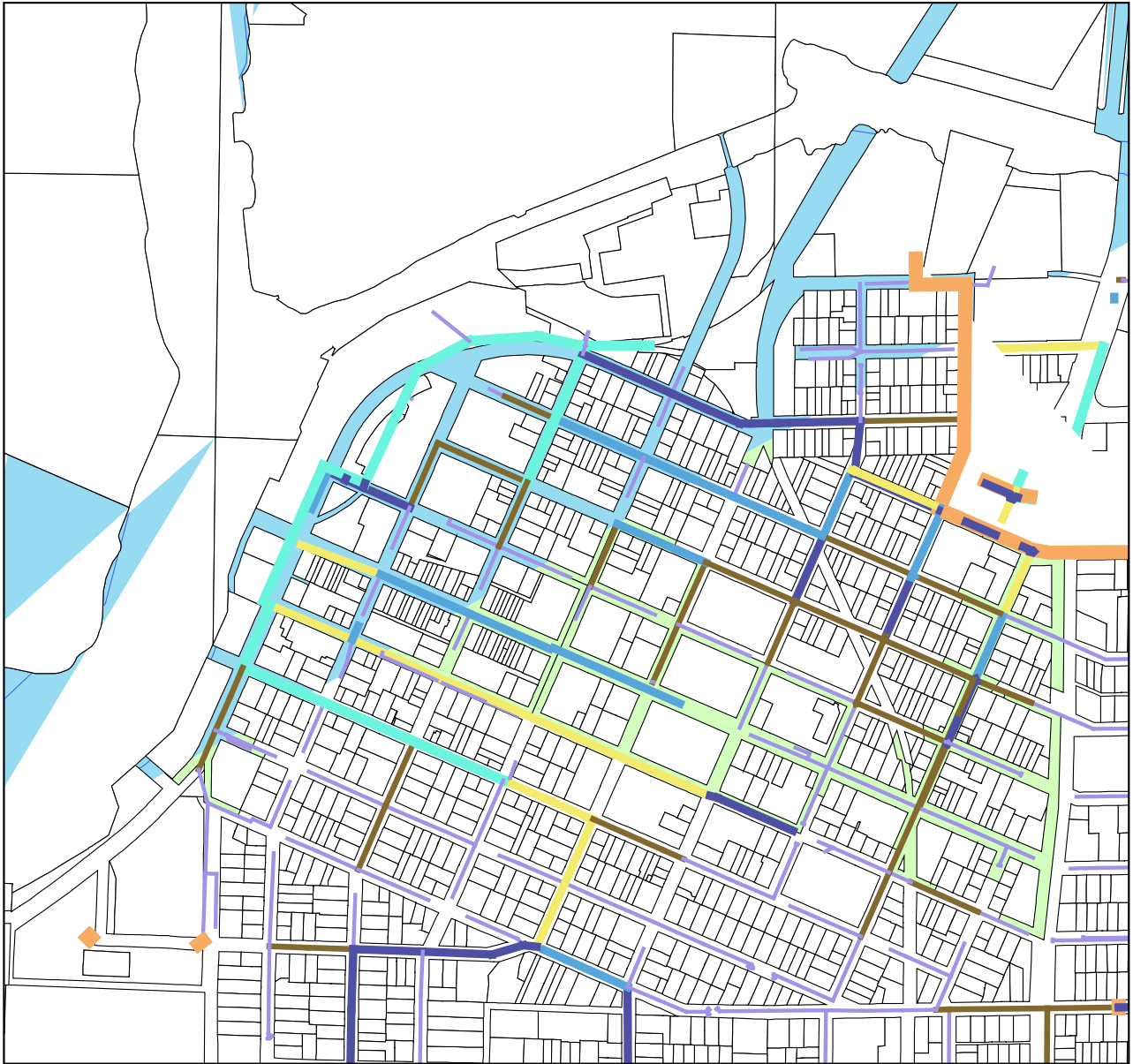
<b>WATER_SYSTEM</b>	16 inch main
<b>Layer</b>	18 inch main
4 inch main	20 inch main
6 inch main	24 inch main
8 inch main	Grand River
10 inch main	Parcels
12 inch main	CBDDA District

## Map 3

### Grand Haven, Michigan Central Business District Development Area Municipal Water System

November 11, 2004





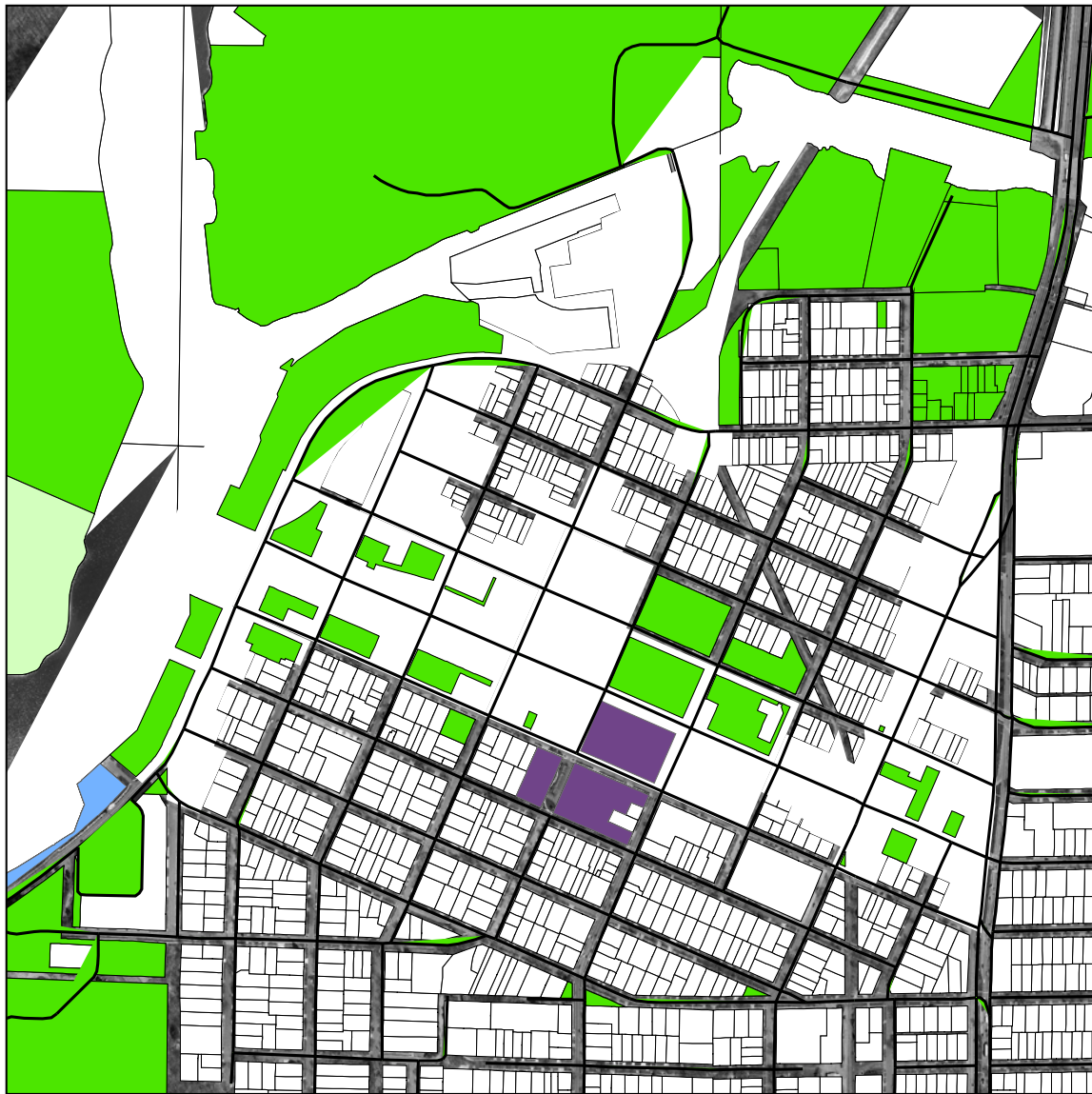
# Legend

<b>Sanitary Sewer System</b>		15_INCH
<b>Layer</b>		18_INCH
8_INCH		24_INCH
10_INCH		FORCEMAIN
12_INCH		parcels
		Grand River
		CBDDA District

# Map 4

Grand Haven, Michigan  
Central Business District Development Area  
Sanitary Sewer Service

November 10, 2004

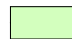



## Legend

 CBDDA Boundaries

## Public Lands

### Property Owner

 City of Ferrysburg

 City of Grand Haven

 Ottawa County

 US Coast Guard

 US Army Corps of Engineers

 US Government

## Map 6

### City of Grand Haven, Michigan Central Business District Development Area Public Lands and Facilities



November 10, 2004